

SUPER FALCON II

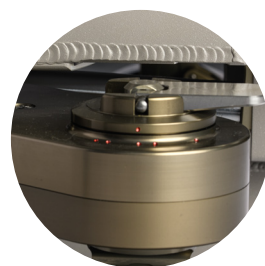
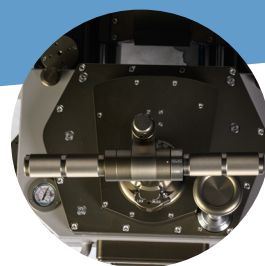
Cinotech
Italiana srl



About Super Falcon II:

Super Falcon II is Cinetech's answer to the industry standards for camera dollies. Tested thoroughly in order to ensure precise and effortless movements, this model is incredibly sturdy and reliable thanks to the high-quality materials and our experience in the field.

Vertical moves are smooth and repeatable with starts and stops.

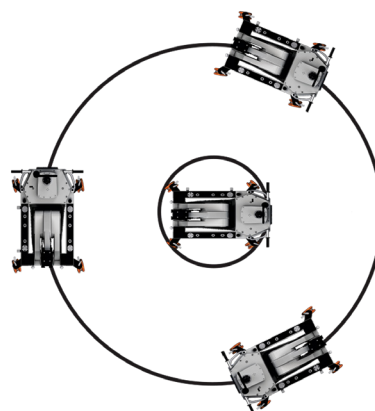


Super Falcon II accessorized

SPECIFICATIONS

Dolly Weight (kg)	149
Length (cm)	(A) 116
Min Width (cm)	(B) 52
Max Width (cm) <small>(with wheels fully open)</small>	(C) 88
Min Height (cm)	(D) 43
Max Height (cm)	(E) 113
Arm Travel (cm)	(F) 70
Power supply (v)	220V/110V (on demand)
Usable track gauge (cm)	62
Lifting weight capacity on the arm (kg)	60
Precharge pressure (Bar)	90
Max working pressure (Bar)	180
Max lifts per system charge	6
Crab	✓
Round	✓
Conventional	✓
Battery powered	no

STEERING MODES AND SPECIAL FEATURES



CONVENTIONAL

Rear wheels rotate 360°, while the front wheels stay locked in place.

CRAB

Front and rear wheels rotate 360° in unison.

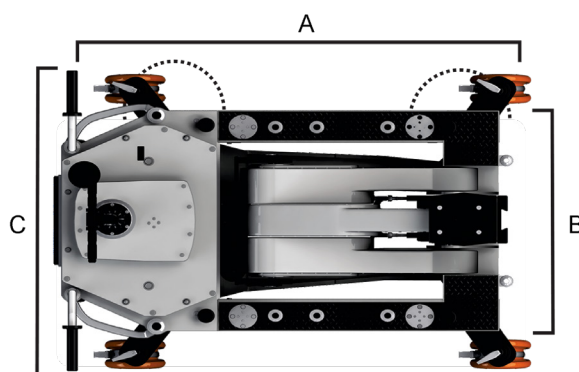
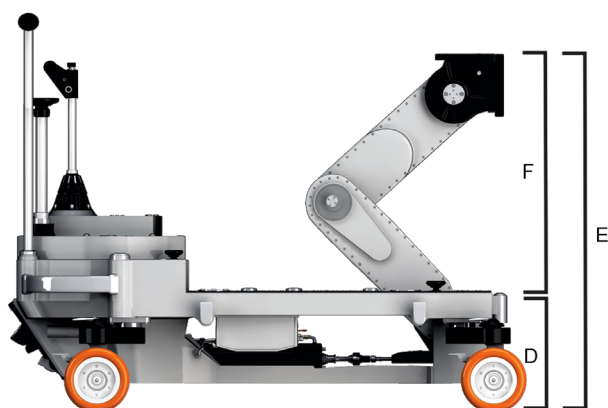
ROUND

Front and rear wheels rotate 360° in synchrony, allowing the dolly to turn around itself and forming a perfect circle.

This dolly is equipped with modern bi-component wheels: this feature ensures usability on tracks and on smooth or rough surfaces.

On demand, it can be also equipped with pneumatic wheels.

Our new flow regulating valve provides an incredibly precise and smooth arm movement, while the new steering lock allows perfect straight movements even when you are not using tracks.



ACCESSORIES

BASIC SET

Accessories:

Basic set of accessories

Code	Description
100011	Euromount (bazooka attachment)
100015	Adjustable Seat
100014	Pump-boom arm handle
110016/L	Side board (Left)
110016/R	Side board (Right)
110017	Front board
100018	Steering column
100019	Power supply cable

Extra accessories

Code	Description
100001	4-way Leveling Head
100002	6" Camera Riser
100003	12" Camera Riser
100004	Bolt & washer set
100005/CR	90° Accessory Plate dove's tail attachment
100005/CRG	90° Accessory Plate dove's tail attachment turnstyle
100005/CRG. BZK	90° Accessory Plate on Euromount
100006	Seat Riser
100007	Push Bar
100009	Solid+pneumatic wheel
100009/Q	Quick attachment pneumatic wheel
100010	Long camera extention
100012	Short camera extention
100016	Universal wheels mixed hardness
100021	Low position leveling head
100022	Leveling head maxi
100023/100	Off/set ball adapter 100 mm
100023/150	Off/set ball adapter 150 mm
110101	Central board
110102	Lifting bar
110103	Kit low board
160012	Adapter for camera riser or LHM or LCE or SCE

100011



100015



100014



110016/L



110016/R



110017



100018



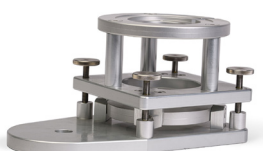
100019



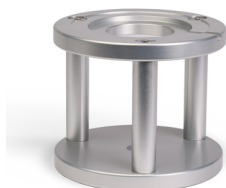
ACCESSORIES

EXTRA

100001



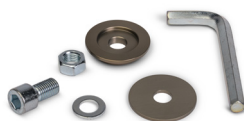
100002



100003



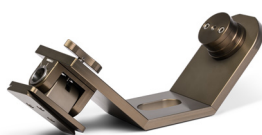
100004



100005/CR



100005/CRG



100005/CRG.BZK



100006



Accessories:

Basic set of accessories

Code	Description
100011	Euromount (bazooka attachment)
100015	Adjustable Seat
100014	Pump-boom arm handle
110016/L	Side board (Left)
110016/R	Side board (Right)
110017	Front board
100018	Steering column
100019	Power supply cable

Extra accessories

Code	Description
100001	4-way Leveling Head
100002	6" Camera Riser
100003	12" Camera Riser
100004	Bolt & washer set
100005/CR	90° Accessory Plate dove's tail attachment
100005/CRG	90° Accessory Plate dove's tail attachment turnstyle
100005/CRG.BZK	90° Accessory Plate on Euromount
100006	Seat Riser
100007	Push Bar
100009	Solid+pneumatic wheel
100009/Q	Quick attachment pneumatic wheel
100010	Long camera extention
100012	Short camera extention
100016	Universal wheels mixed hardness
100021	Low position leveling head
100022	Leveling head maxi
100023/100	Off/set ball adapter 100 mm
100023/150	Off/set ball adapter 150 mm
110101	Central board
110102	Lifting bar
110103	Kit low board
160012	Adapter for camera riser or LHM or LCE or SCE

100007



100009



100009/Q



100010



100012



100016



100021



100022



100023/100



100023/150



110101



110102



110103



160012

